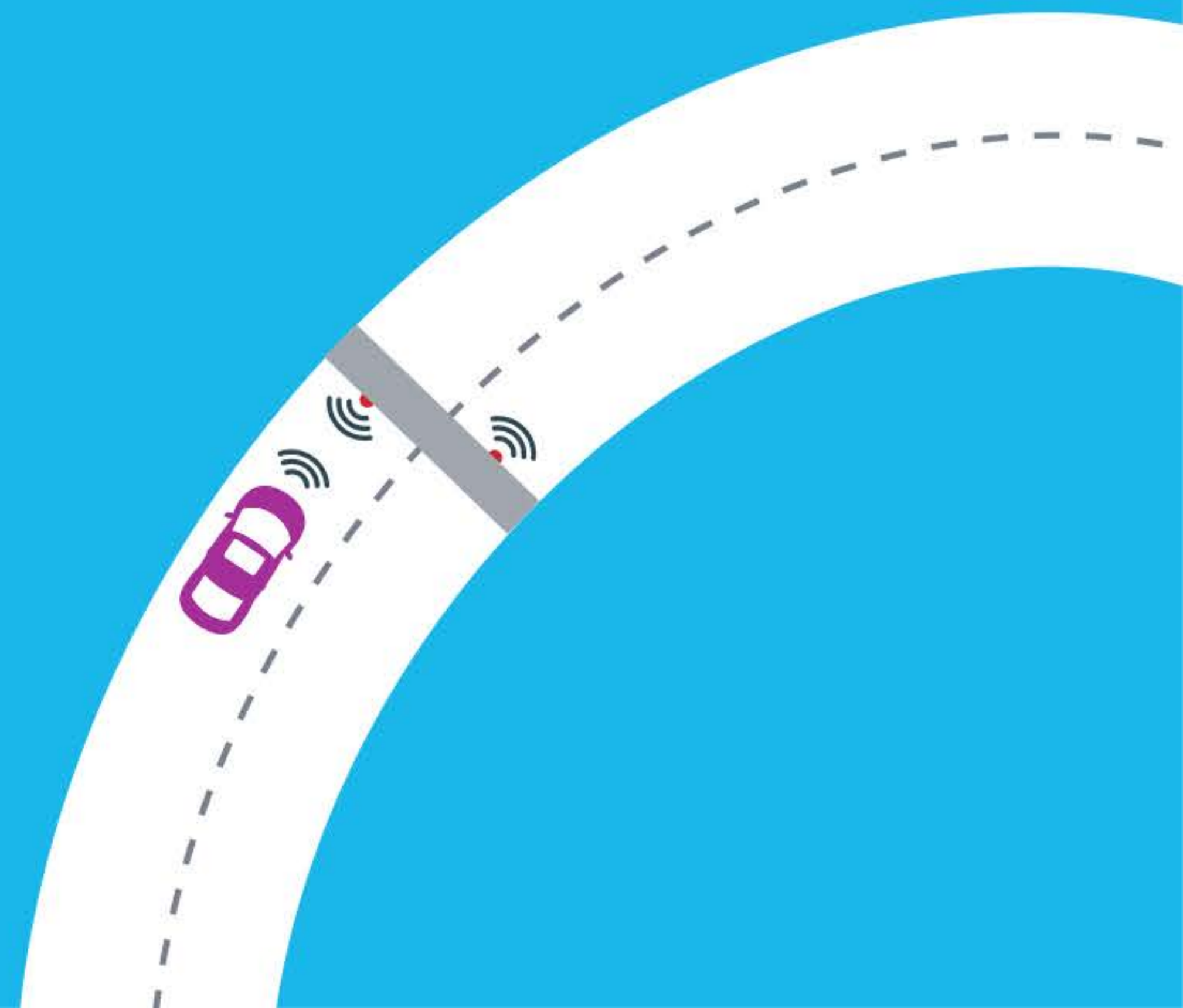


# Tag Installation & Athermic Windscreen Guide



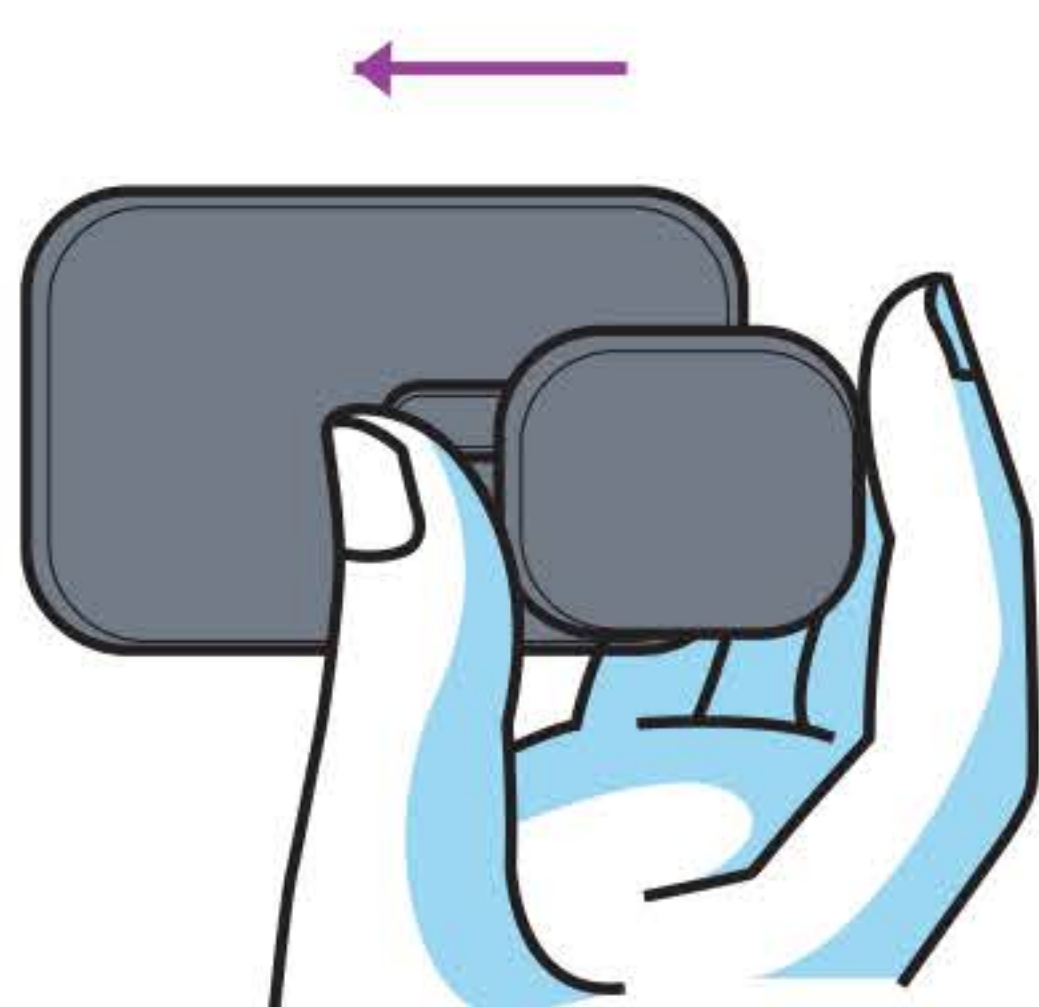
# Tag Installation Guide

## Installing your tag in a vehicle

You should install your eFlow tag inside your vehicle, **just behind the rear-view mirror.**

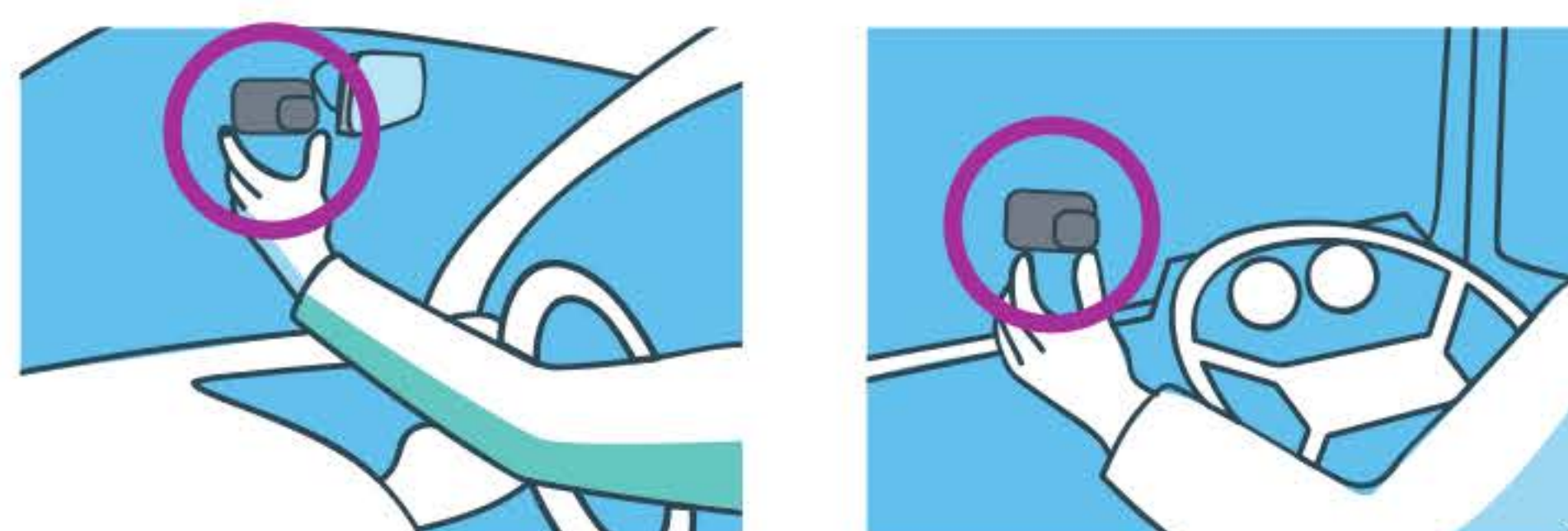
### 1 | Insert The Tag

Attach the holder to the tag by sliding it into the slot of the tag, as pictured.



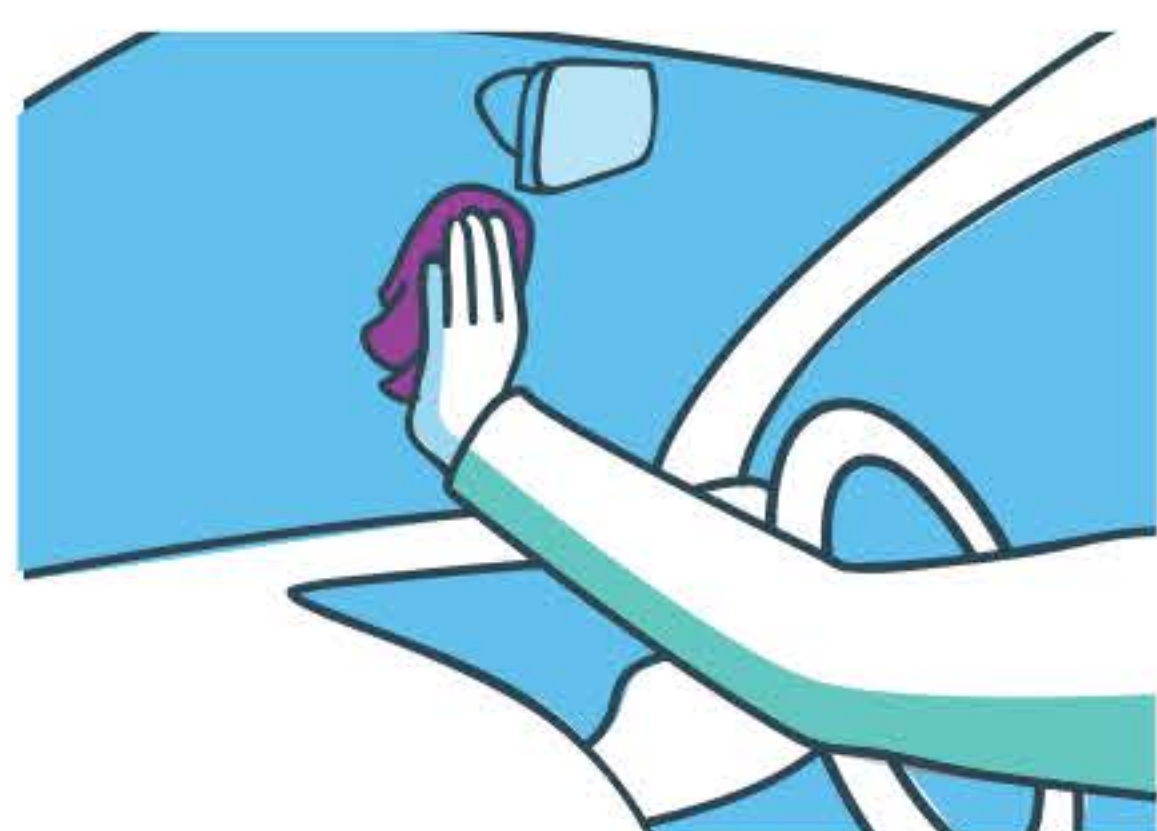
### 2 | First Check The Position

Before you remove the adhesive protection, place the holder including the tag horizontally behind the rear view mirror (at the bottom centre of the windscreen), making sure that it will fit and not obstruct the driver's view.



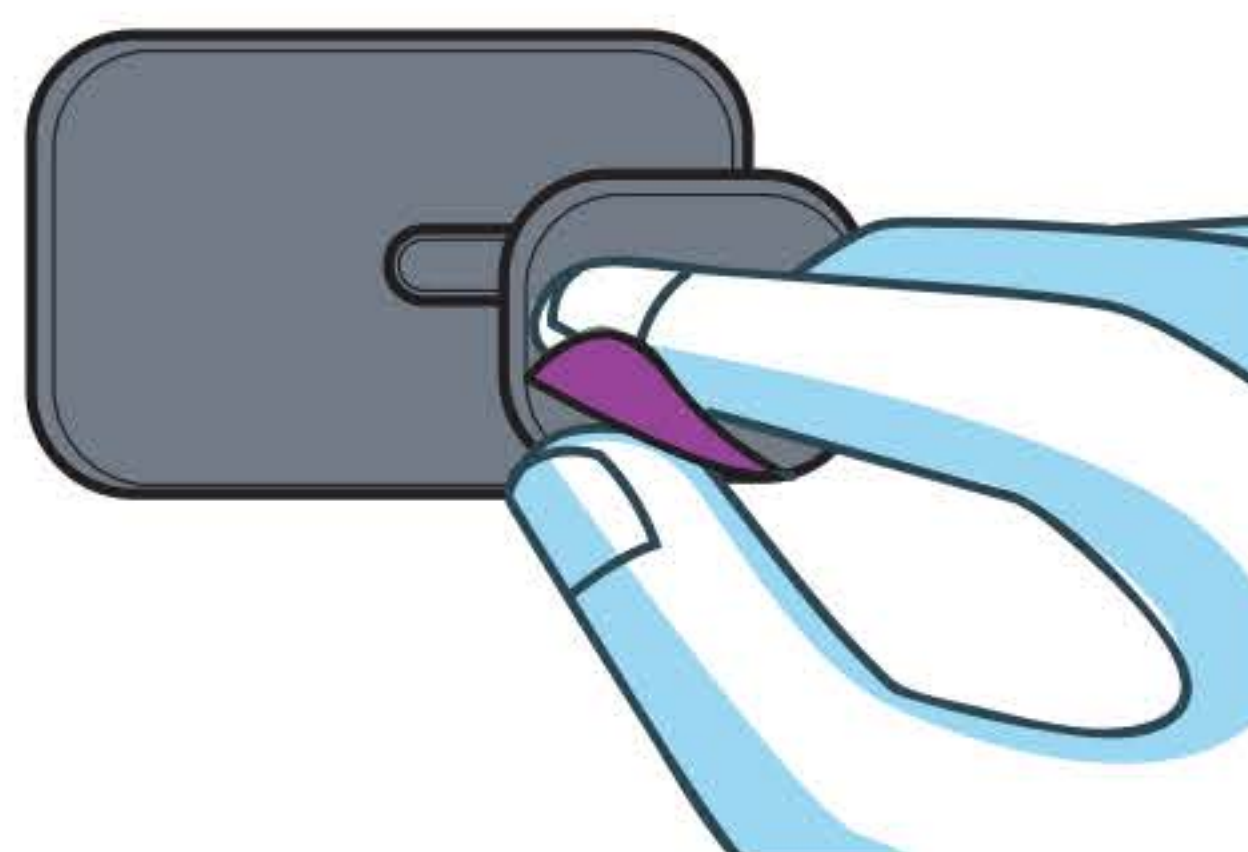
### 3 | Clean Your Windscreen

With the cleaning tissue provided, clean the windscreen where the tag will be placed. Make sure that the windscreen is dry and has a temperature of at least 15°C. If necessary, dry with a cloth.



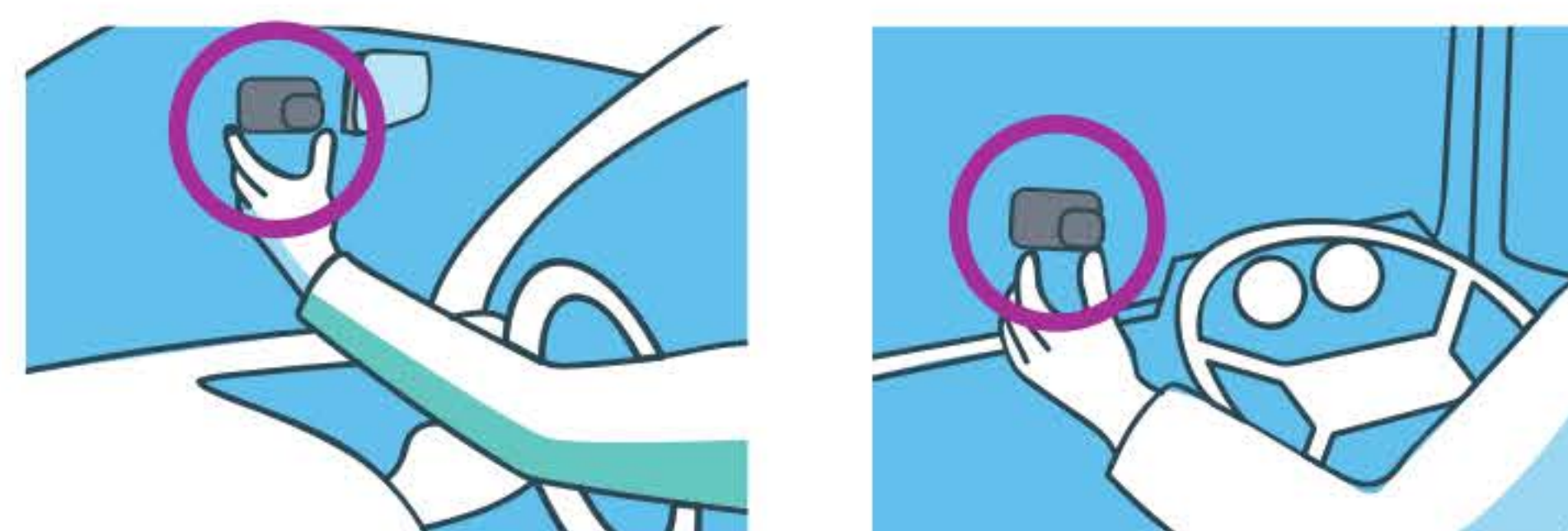
### 4 | Remove Adhesive Protection

The tag holder is now ready to attach to the windscreen.



### 5 | Attach The Holder

Fix the tag holder (with tag attached) on the windscreen, making sure that the tag is straight. Hold firmly for at least 10 seconds. If your windscreen is UV-coated, install the holder on the black dots.



**Note:** Some windscreens have a metallic layer to reflect heat from the sun. In this case the tag must be placed within the designated areas of the windscreen without this coating. These are normally marked with a different colour or pattern.

# Athermic Windscreen Guide

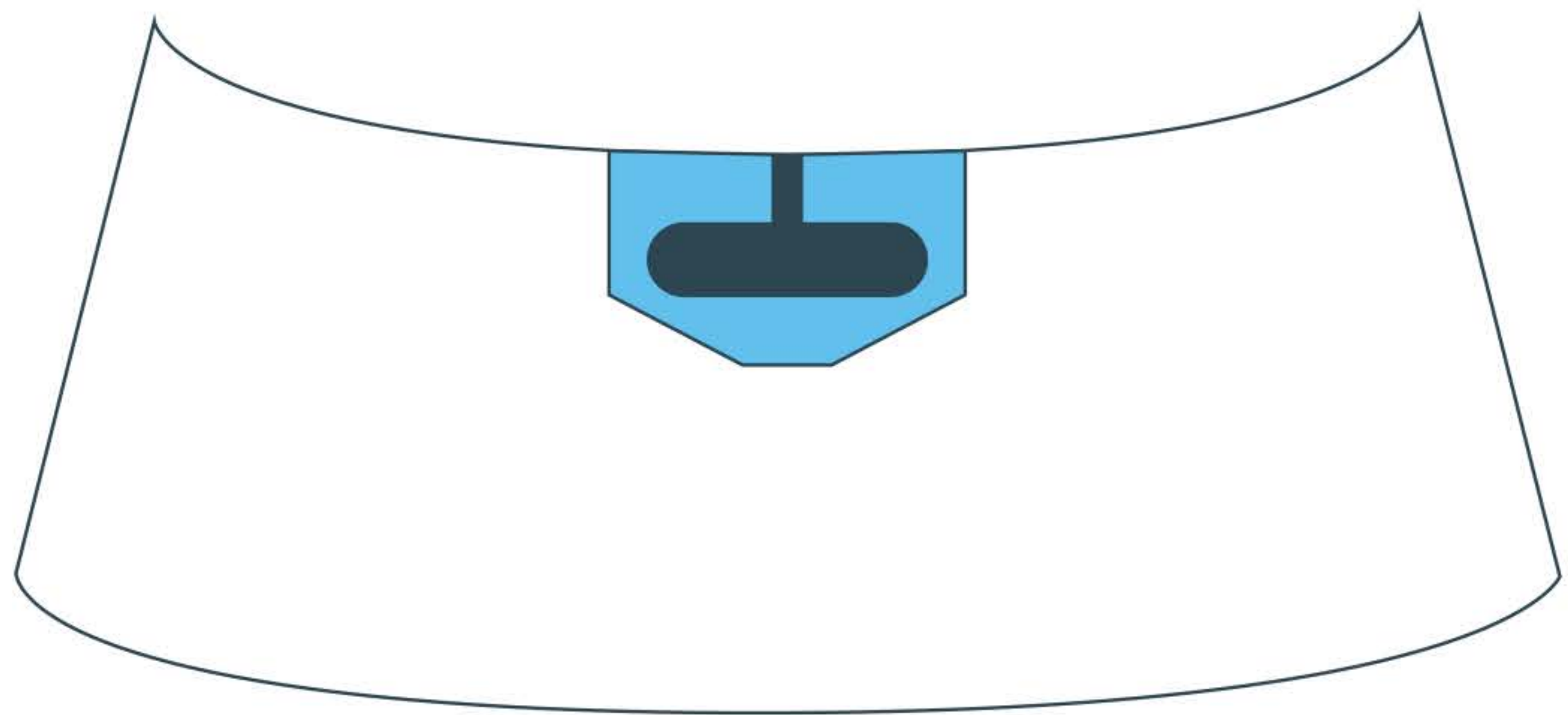
## Tag placement

For accurate tag readings on toll roads nationwide, it is important to position your tag in the correct location. Please read these instructions before affixing your tag. The tag must be placed behind your rear-view mirror in the centre of the shaded/dotted area.

The tag **MUST** be placed **behind the rear view mirror** in the centre of the **shaded/dotted area**.

The **shaded/dotted area** varies in shape depending on the make and model of the vehicle.

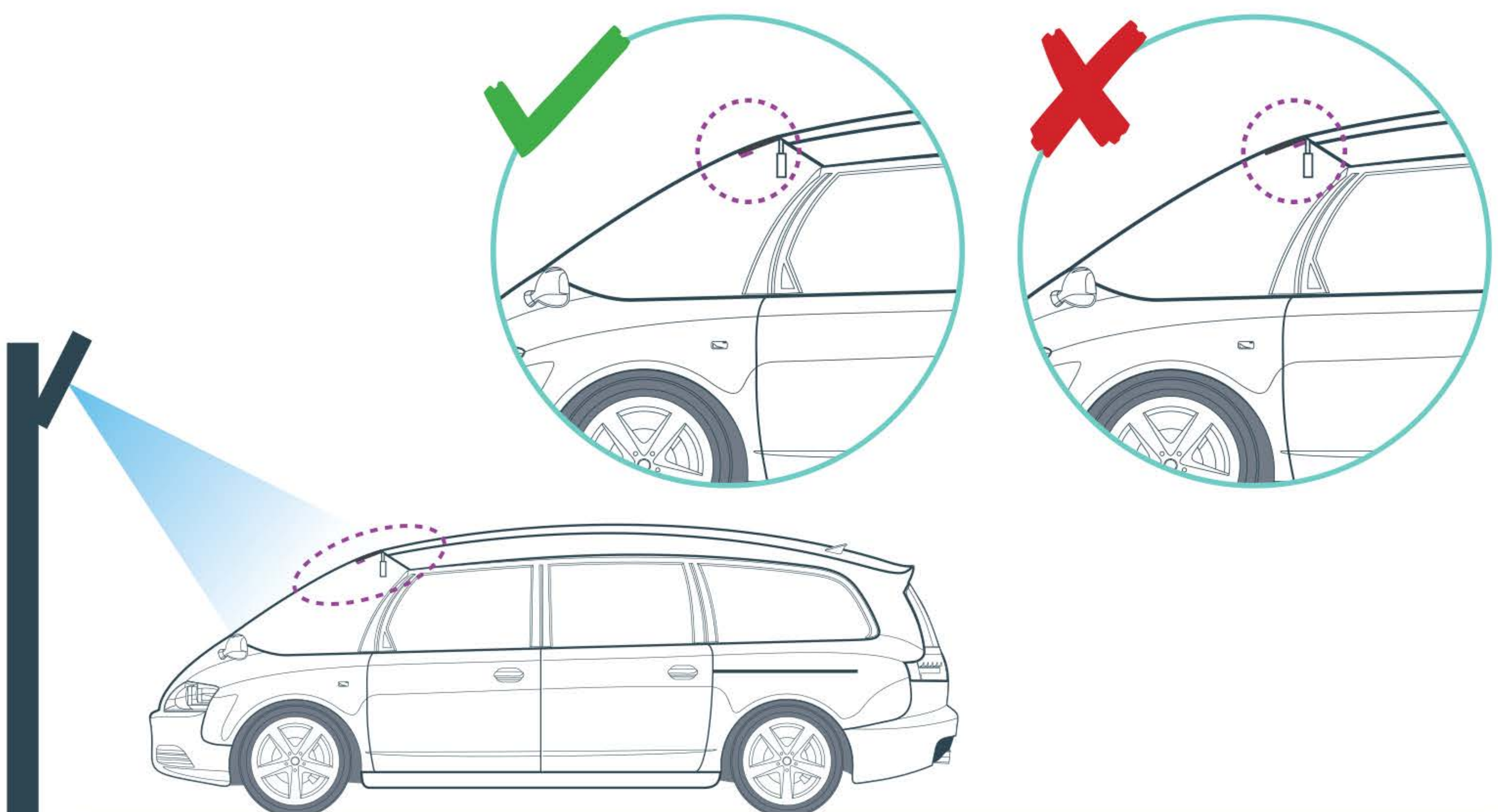
It has been **specifically designed to enable tags to work** particularly on cars with **metallic/athermic and heated windscreens**.



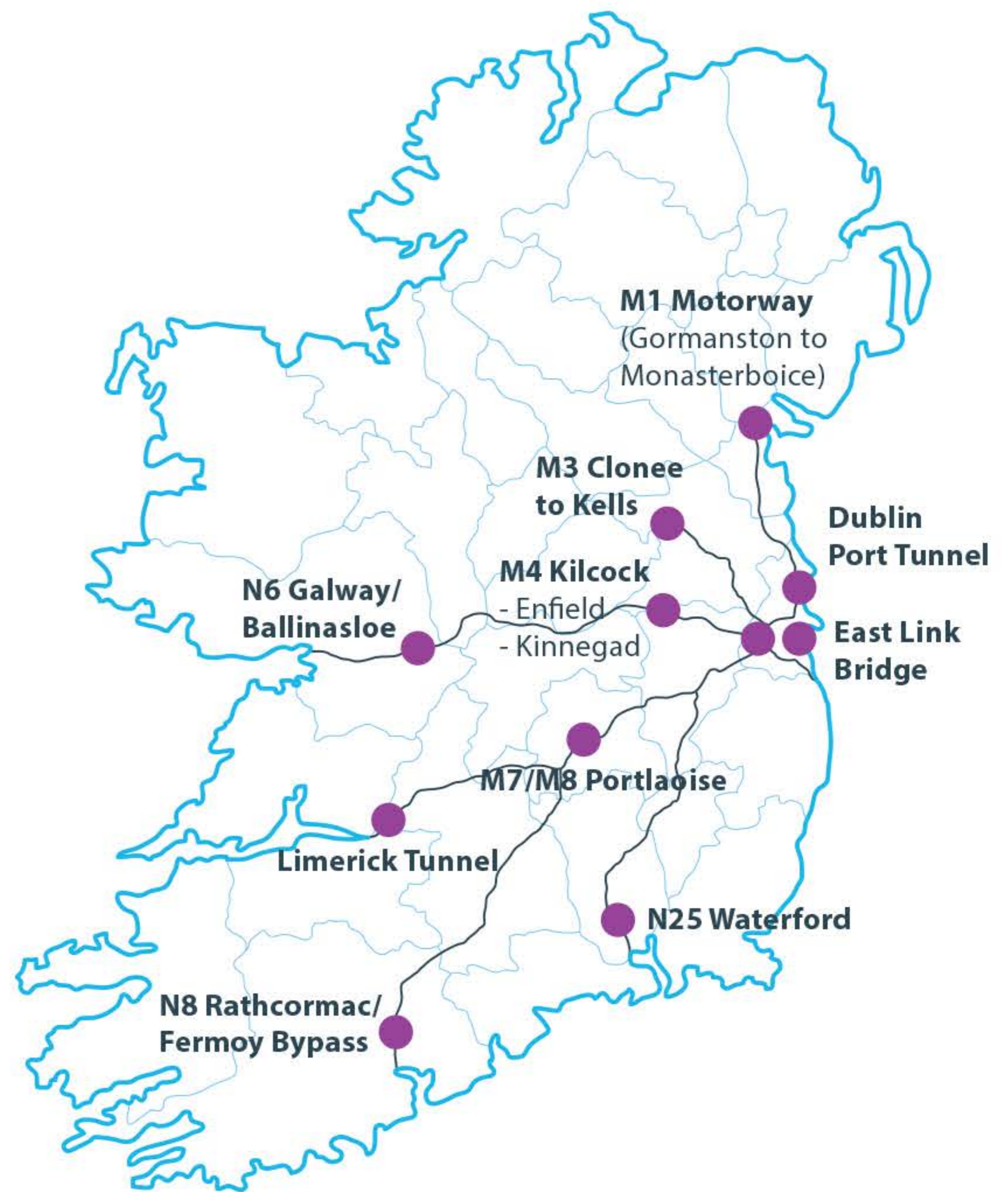
**This is critical for vehicles with heated or athermic windscreens.** Some older model cars may not have this shaded area. If this is the case, simply place behind the rear-view mirror.

## Fitting Instructions For Modern People Carriers And Vans

e.g. Renault Espace, Citroen Grand Picasso, Ford Focus SMax, Ford Galaxy.



# YOUR EFLOW TAG WORKS ON **EVERY** **TOLL ROAD IN** **IRELAND**



## A Few Pointers

---

- For safety, it's best to install the holder or position the tag when your vehicle is not moving.
- To ensure it can be read by all tolling detectors you must keep your tag installed permanently.
- Your tag cannot be used on multiple vehicles, so please ensure the serial number on the tag matches the licence plate of the vehicle it's attached to.
- This is especially important if you have registered for more than one tag on your account.
- Please be aware that your tag will work immediately on the M50 toll road, however it can take between four and six working days from the issue date on the letter you received with your tag, to become active on all other toll roads around Ireland.

[www.eflow.ie](http://www.eflow.ie)

[@eflow\\_freeflow](https://twitter.com/eflow_freeflow)

**eflow**  
you first

Cape House, Westend Office Park, Blanchardstown, Dublin 15.